

Figure 2.12.
Historical overview of number of international organizations by type
1983-2017

The data for these charts are extracted from Figure 2.9. The comments given in Figure 2.9. are also applicable here. Users are particularly advised to consult 1.3. "Types of organization" and 1.4. "Continuity".

In every case, the line with short dashes indicates the number of intergovernmental organizations (IGOs), the line with long dashes indicates the number of international non-governmental organizations (NGOs), and the solid line indicates the total of IGOs and NGOs.

Only organizations of Types A B C D E F are included here.

The X axis goes from 1983 on the left to 2017 on the right. Note the difference in scale in the Y axis on these charts.

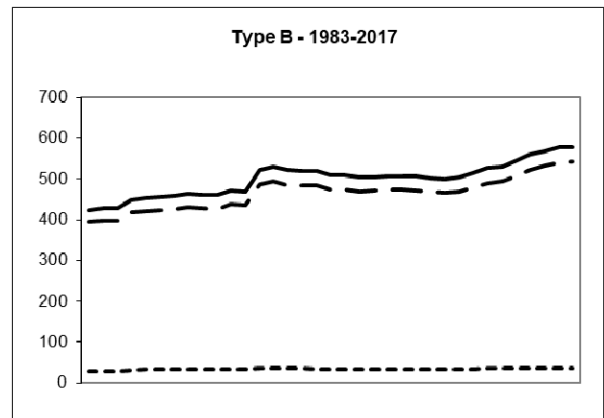
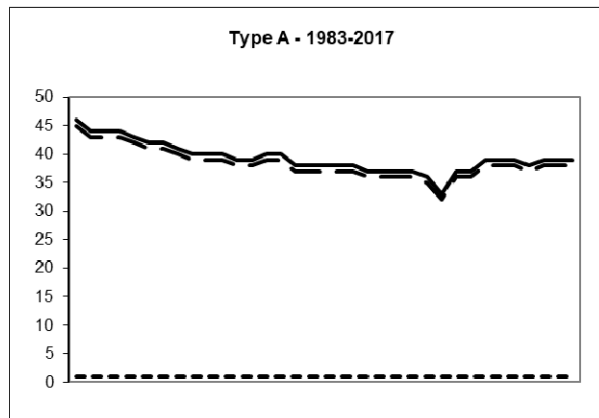
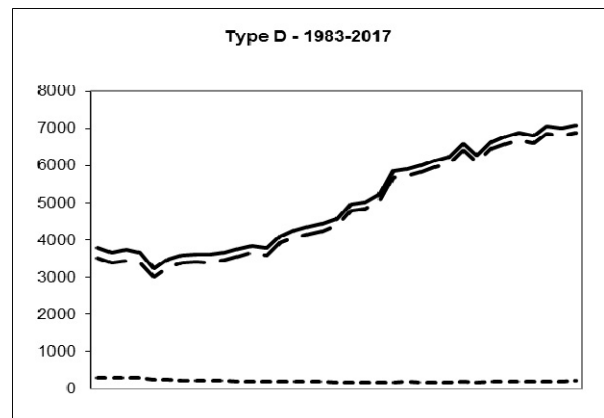
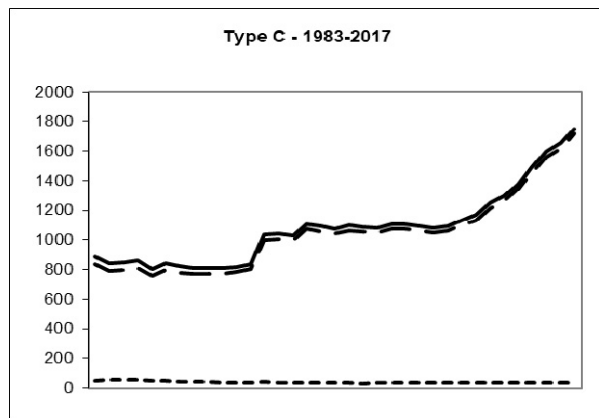


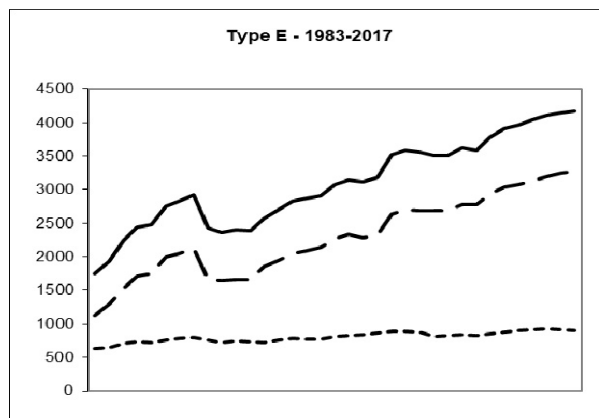
Figure 2.13.
Historical

Historical overview of number of international organizations by type

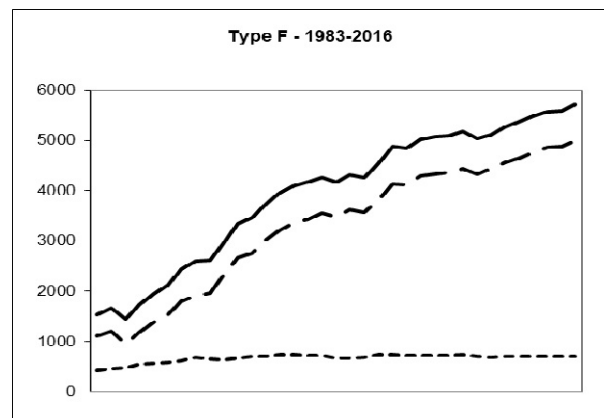


1992 - 2017
 The data for these charts are extracted

from Figure 2.9. The comments given in Figure 2.9. are also applicable here. Users are particularly advised to consult 1.3. "Types of organization" and 1.4. "Continuity".



In every case, the line with short dashes indicates the number of inter



governmental organizations (IGOs), the line with long dashes indicates the number of international non-governmental organizations (NGOs), and the solid line indicates the total of IGOs and NGOs.

Only organizations of Types G K N R S T are included here.

The X axis goes from 1992 on the left to 2017 on the right. Note the difference in scale in the Y axis on these charts.

